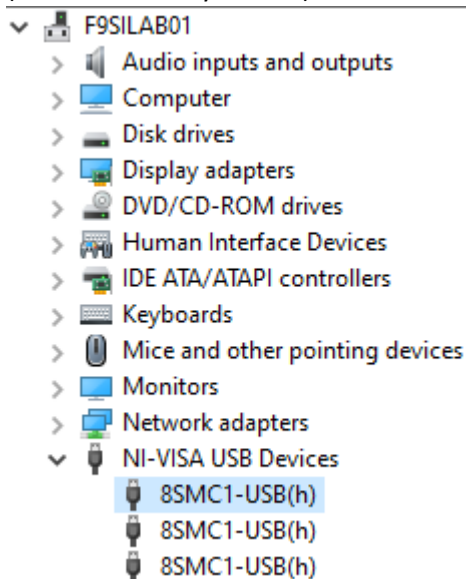


How to migrate from Windows 7 to Windows 10 using Particulars PSTCT and Standa 8SMC controller!

- 1.) Download the package from here (or Standa)
- 2.) Unzip it in any folder of your liking
- 3.) Run SMCView on Windows 7 machine and update the firmware according to instructions in the readme_firmware_update.txt .
- 4.) Install the MicroSMC (installing MicroSMCx64 will not make your stages ready for PSTCT)!
- 5.) Restart the machine with driver signing disabled; hold SHIFT while restarting the computer select “Troubleshoot” , “Restart” and then F7 (disable driver signature enforcement)
- 6.) Run “Device manager” and under unknown device select driver manually in the folder where you installed SMCView in the Drivers folder. Select “8SMC1-USB(h)” and ignore windows warning. You should the drivers under NI-VISA USB Devices. Having any other configuration (MicroSMCx64.sys driver) will not work.



- 7.) That's it.